



Group Presentation

2024

Group team is comprised of highly experienced energy industry professionals with expertise in all aspects of the renewable energy field, covering the full project life cycle from development through construction.

Group team applies its pioneering experience to all aspects of project development, from project inception through completion of construction and operations.

During project development, Infinity leads all aspects of project origination including site evaluation, engineering, real estate procurement, permitting, environmental analysis, power marketing, and financing to see a project through this often complicated process.

During construction, infinity manages the multi-faceted construction activities including final engineering and design, procurement, permitting, civil construction, electrical construction, and wind turbine erection or solar array assembly.

Our Team develops renewable power projects for your company by using experience status.

Development & implementation of Climate Change.

Consulting & Funding Services from experienced partners.

Property Management & Real Estate.

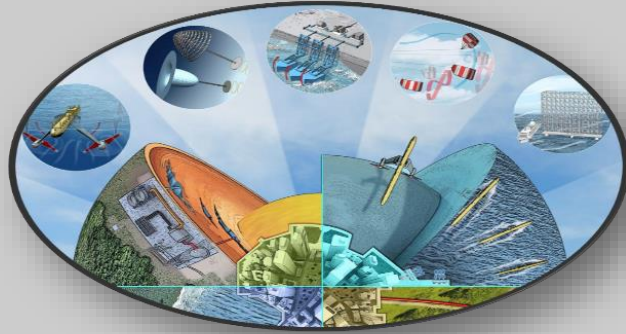
Shipping & Yachting.

A close-up photograph of a person's hand in a white shirt pointing towards the right. The background is blurred, showing more of the person's torso and another person's hand holding a device.

AboutUs

GROUP OF COMPANIES

Group



Companies

- LL GLOBAL HOLDINGS LTD
- CAPITAL ENERGY
- AVJ CONSTRUCTIONS & DEVELOPMENT
- VASALINO ENERGY
- DIMENSION ENERGY
- RAYTECH ENERGY
- ADD GLOBAL

Sectors

- Renewable Energy
- PV Manufacture Official Distribution
- Funding & Consulting
- Climate Change
- Carbon & CO2 Emissions Trading
- Shipping & Yachting
- Property Management
- Manpower

London
UK

Belgrade
Serbia

Athens &
Thessaloniki
Greece

UAE
Dubai

Morocco
Casablanca



Our Promise

Professional Services at Renewable Energy Projects

Group's leading renewable experts remove layers of risk that are inherent in renewable energy projects, through sophisticated Technical, Grid, Social and Environmental analysis.

Either as Developers or as Owners' Engineers and Project Managers, we have built a prestigious track record in complex project and contractual environments. Our focus and core competence is on key parameters, such as Compliance, integration, techno-economical feasibility and timely delivery.

Our references drive our confidence in all steps of a project's life-time, from conception, development, design and engineering all the way to procurement optimization, construction, commissioning, grid connection, operation and maintenance.



Executive Services

LL GLOBAL HOLDINGS

- Property Management
- Carbon & CO2 Emissions Trending
- Shipping

CAPITAL ENERGY

- Property Management UK
- Shipping
- Real Estate

AVJ CONSTRUCTIONS & DEVELOPMENT

- Development Management
- Project Management
- DAS SOLAR Official Seller

VASALINO ENERGY

- Development & EPC
- Official Distributor ARIA Srl

RAY TECH - ENERGY

- Development & EPC

ADD GLOBAL

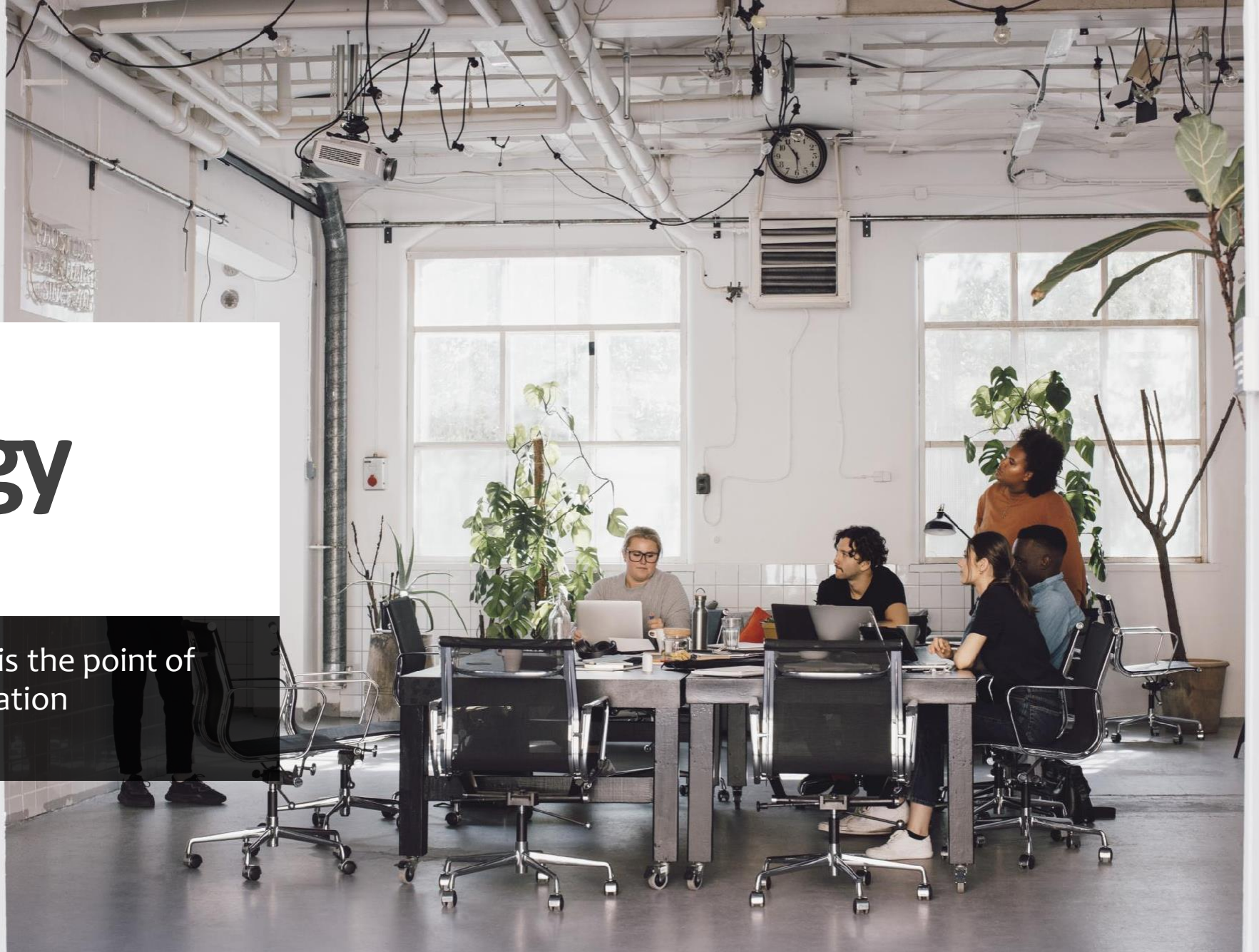
- Carbon Trading UAE & Morocco

DIMENSION ENERGY

- Official Distributor EOS Batteries

R.E. Strategy

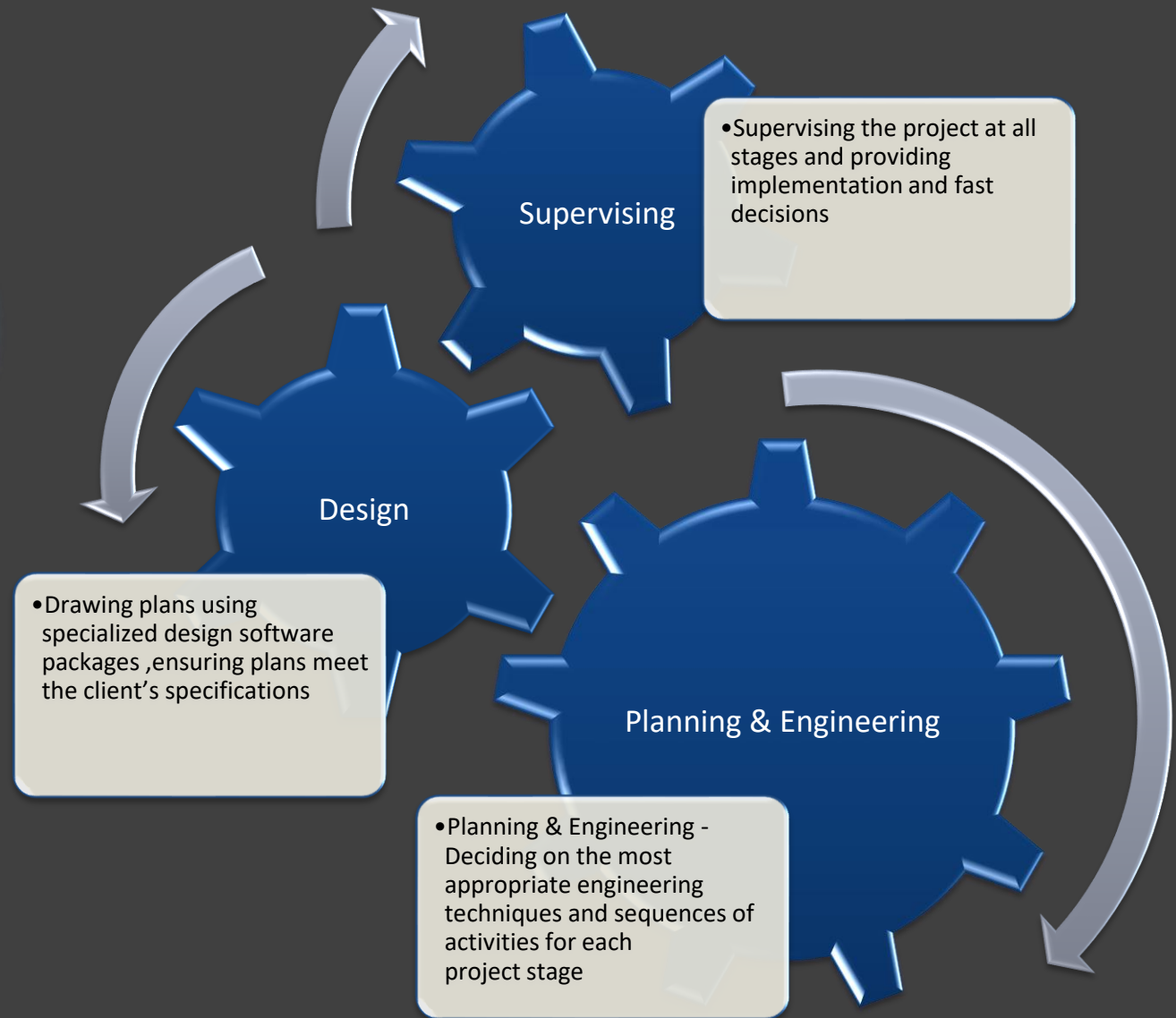
Our Status of Key Cooperation is the point of interest for success implementation





Renewable Energy

Turn Key



2022-2025

Development of Solar Power Plants 285MWp Serbia & Greece

2023-2025

Development of Wind Power Plant 180MWp Greece , BiH

2023-2025

Project Management 300 MWp Greece, Serbia , Cyprus , UK

2024-2025

Exclusively Development of 930MW Morocco

2024-2025

Battery Storage 5 x 25MW-50MW Greece

2024-2026

Development of Solar Power Plant 130MW & Battery Storages 25MW-50MW Greece

Solar , Wind , Battery Storage






MARKET



Photovoltaic Panels
DAS SOLAR



EPC
TURN KEY
SUB CONTRACTOR



Inverters
SUNGROW, KACO
SIEMENS



Electrical
Equipment (ABB,
Schneider)



Commercial
Partnerships
DAS SOLAR






Clean power for all







Group Structure

Ownership

T. Lemos V. Antonopoulos F.D. Insurance Fund

Legal: KLC GR -V. Stankovic SRB –D.
Jackson UK-Paul John & Co
Solicitors UK, M. Von Unger BEL

Economist : DDP UK – Pf. Dr. I.
Mladenovic SRB .- Pf. Dr. M. Dixon
UK, PHD E.F D. Rezende

Offices : Athens , Thessaloniki,
Dubai , Casablanca

Human Resources : Mechanical Engineer Team 22,
Environmental M. Engineer 2, Assistance 12 ,
Technical Department 34, Accountants 5, Analyst &
Designers 12, Consultants 4, Traders 3, Supervisor
Team 4, Yachting Crew 72, Shipping Crew 122.



Email
Contact

ll@globalholding.com

info@capital-energy.com

info@avjconstructions.com

info@vasalino-energy.com

info@addglobaleu.com

info@dimensionenergy.com